

Description of product:

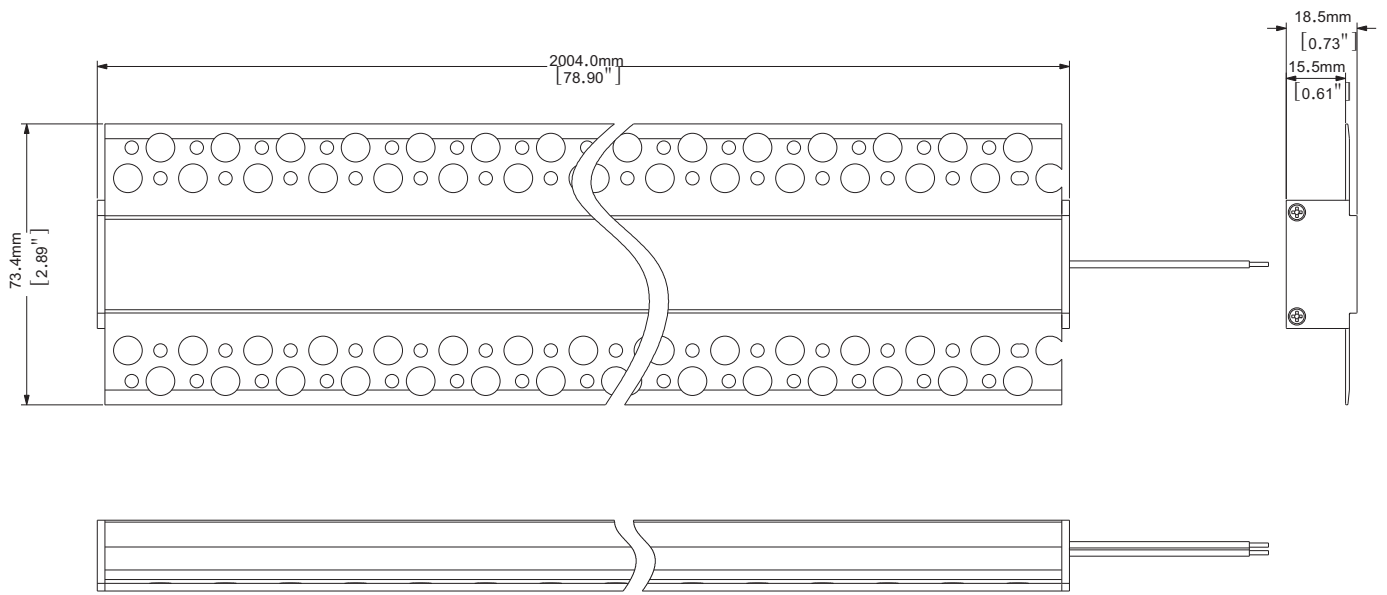
It uses the high quality 2835 SMD LED, which has high brightness, vivid color, downy light, concise appearance and no glare. And it is energy saving and environment protection, which has no ultraviolet, infrared and mercury pollution. The main material of it is aluminum alloy and PC, which could make the product work more stable and safer. Its service life can be up to 30,000 hours.

Application:

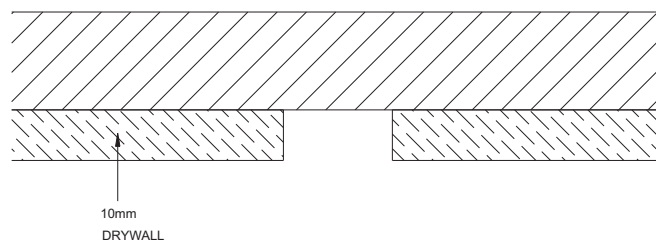
It is widely used in decorative lighting of architectural walls.



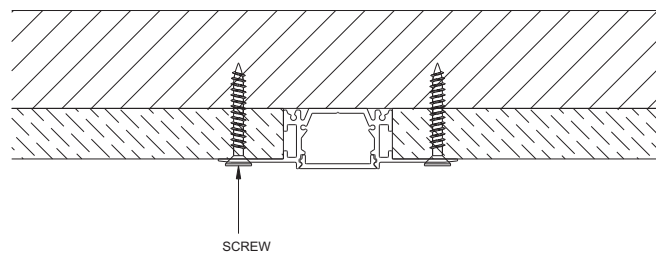
Dimension (Unit: mm/inch):



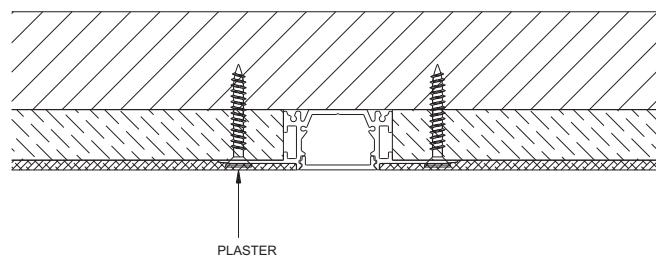
Installation introduction:



Step 1



Step 2



Step 3

